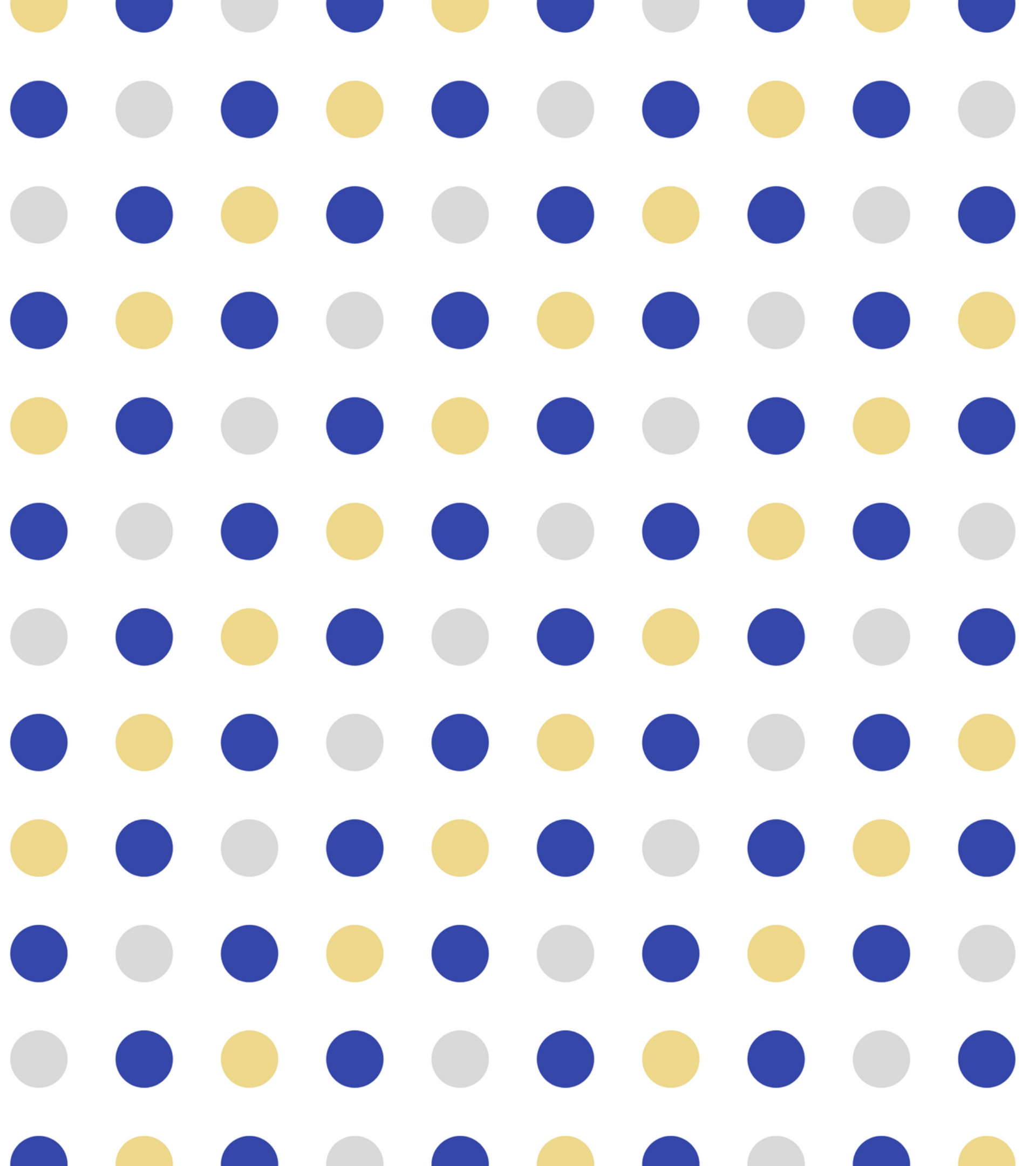


#LAURIERVOTES

*Information  
Session*

**sucro@wlu.ca**



# *Available Positions*

## **Students' Union**

- President & CEO (1)
- Board of Directors (12)
- Referendum Party Chair

## **Wilfrid Laurier University**

- Student representative on Senate (6)  
\*Atleast 1 from Branford campus
- Student representative on the Board of Governors (1)

**#LAURIERVOTES**

# President & CEO

(1)

**#LAURIERVOTES**

- Serve as the Chief Executive Officer and official spokesperson for the Student's Union
- Oversee all functions and departments of the Students' Union
- Hire and manage a team of Vice Presidents, who will aid and oversee the various departments and functions of the Student's Union
- Frequently communicate with University Administration, city officials, and Provincial and Federal members of Parliament
- The President is financially compensated for 40 hours/week

# Board of Directors

(12)

**#LAURIERVOTES**

- At least 2 from each campus
- Leading the long-term strategic direction of the Student's Union
- Analyze and develop high-level policy for organizational growth and maturation
- Monitor the performance of the President/CEO based on a set of Board-mandated policies
- Facilitate and participate in outreach events Foster a multi-campus mentality that aims to benefit the needs of students on both the Brantford and Waterloo campuses

# Referendum

# Party Chair

**#LAURIERVOTES**

- Run a “yes” or “no” campaign with respect to a referendum question

# Senate

(6)

The Senate deals with the educational policies of the University and makes recommendations to the Board of Governors with respect to the operation of the institution. Students will have the opportunity to participate in discussion and debate on these areas of influence, including possible participation on the following committees:

- Academic Planning
- Executive and Finance
- Governance
- Honorary Degree
- Student Appeals
- Teaching and Learning

**#LAURIERVOTES**

# Board of Governors

(1)

The Board of Governors deals with the control of the institution's property, its revenues, and the conduct of its business and affairs

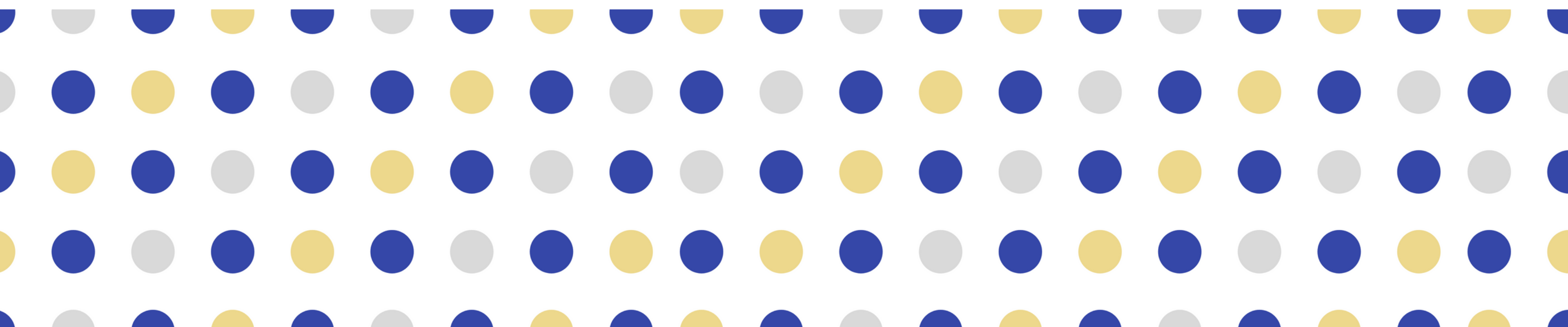
Students will have the opportunity to participate in discussion and debate on these areas of influence, including possible participation on the following committees:

- Executive
- Audit, Risk & Compliance
- Finance, Investments & Property
- Human Resources

**#LAURIERVOTES**

#LAURIER✓OTES

*Questions?*





# Dates to Remember

**January 6th, 2022** — Nomination Packages and Platform summary are due before noon

**January 7th, 2022** — Full platform is due before noon

**January 9th, 2022** — All Candidates' Meeting at 7:00pm

**#LAURIER✓OTES**

# Dates to Remember

**January 12th, 2022** — Open Forum at 12:00pm

**January 19th, 2022** — Open Forum at 3:00pm

**January 18th, 2022** — Presidential Debate at 3:00pm

**January 24th, 2022** — Presidential Debate at 3:00pm

**#LAURIER✓OTES**

# Passion Platform

- Ideas: Why you're best for the role, Why should people vote for you?
- Ideas: Outline your experience and how you would best be able to represent students
- \*Please note this is not a criteria.
- Max 150 words
- If you go over 150 words, we cut it off with a slash
- Posted on the SU website, in the Cord, and on the ballot
- \*May also be reproduced in other locations\*
- The main points that you feel are most important
- Can be your full platform if under 150 words
- If you do not submit a platform summary by noon on January 6th, you do NOT get to submit a platform in the Cord or on the SU website
- \*Any platform you post would be unofficial\*
- You also need to submit your complete platform within 24 hours

**#LAURIERVOTES**

# Nomination Package

**Consists of:**

Nomination Form  
Proof of Registration Form  
Proof of Age Form  
Signature Page Form  
Choice of Agent Form  
Proof of Registration Form - Agent

**#LAURIERVOTES**

# Nomination Package

## #LAURIERVOTES

- Proof of Age
  - MUST be 18 by Election Day (legally)
  - Include a photocopy of government ID providing date of birth
- Signature Page
  - B.o.G + Senate --> Need 10 signatures
  - Party Chair --> Need 25 signatures
  - Board of Directors --> Need 25 signatures
  - President --> Need 75 signatures

Email [sucro@wlu.ca](mailto:sucro@wlu.ca) for your digital signature page

\*\*NOTE: Get more signatures than you need (if someone incorrectly enters their student number or is a grad student/ineligible to vote, they don't count)

\*\*NOTE: Submit these early

# Nomination Package

## **Choice of Agent Form**

- Your agent counts as being "you" based on elections policies
- If you cannot attend the All Candidates' Meeting, you are disqualified

\*Because your agent is "you", if THEY are at the All Candidates' Meeting, you would not be disqualified\*

- If you so choose, your agent can represent you at any elections event or function  
E.g. appeals, open forums, etc.

**#LAURIERVOTES**

# All Candidates' Meeting

- Bring your campaign teams!
- January 9th at 7:00pm
- You will get further explanation of all rules, policies you need to know etc.
- If neither you nor your agent are present, you will be disqualified
- 30 minutes after the meeting ends, campaigning can begin

**#LAURIERVOTES**

# Campaigning

- Each candidate is allotted a budget - you are not given the money, but you can claim it in reimbursements

\*NOTE: Get all materials approved by the CRO BEFORE you buy because if you don't it may not be useable/reimbursable\*

\*You may NOT exceed the budget allocated

**#LAURIERVOTES**



# Campaigning

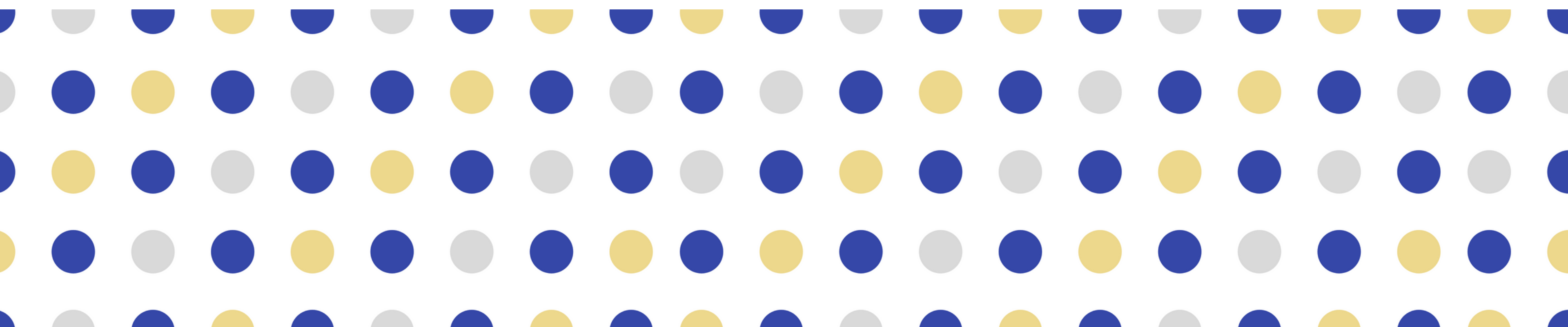
## Demerits

- Any time a rule is broken, you will receive demerits; the full list can be found in the Elections & Referendum Policies:
- Candidates: if you get 10 demerits you are disqualified
- Party chairs: if you get 7 demerits you are disqualified
- Will be emailed to you
- If you would like to appeal, you must provide your reasons to the CGO (subboardchair@wlu.ca) by 11:59pm the following day
- All demerits resulting in disqualifications are automatically appealed
- Check your email constantly; if you do not read your demerit within the 24 hour period, you may not appeal

**#LAURIERVOTES**

#LAURIER✓OTES

*Questions?*



Follow us on  
Instagram & Twitter

**@lauriervotes!**

**E-mail [sucro@wlu.ca](mailto:sucro@wlu.ca) with  
any questions!**

**#LAURIERVOTES**

**JANUARY 25 - 27, 2022**

**LAURIERVOTES.YOURSTUDENTSUNION.CA**

